



CLEAVERVILLE 13

# Camping information

Camping within the City of Karratha region is permitted at Cleaverville and Gnoorea Point (40-Mile) nature-based camping areas, holiday and caravan parks and, when necessary, the overflow camping area.

Camping is not permitted at Balla Balla, Hearsons Cove, Dampier Palms or any other public area including town sites, parks/playground areas, carparks, coastal areas and bushland, unless it is a caravan park or designated camping location.

In 2017 Karratha was officially declared an RV Friendly Town™. For more information, please contact the Karratha visitors centre.

## **Tourist Information**

KARRATHA TOURISM & VISITOR CENTRE,  
4548 DeWitt Road, Karratha  
Ph: 9186 8055  
Email: [visitkarratha@karratha.wa.gov.au](mailto:visitkarratha@karratha.wa.gov.au)  
[www.karrathaiscalling.com.au](http://www.karrathaiscalling.com.au)

## **Rest Stops**

There are three 24-hour rest stops conveniently located near Uffulla, FcVY Rj Yf fYg stop and Miaree Pool, both between Onslow and Karratha, and West Peawah between Karratha and Port Hedland. For information on rest stops and road closures visit [www.mainroads.wa.gov.au](http://www.mainroads.wa.gov.au).

## **National Parks**

Both entry fees and camping fees apply. Toilets, water, information shelters, picnic tables, gas barbecues are available at various gorges. No pets or animals are permitted in the National Parks.

### **KARIJINI NATIONAL PARK**

<http://parks.dpaw.wa.gov.au/park/karjini>

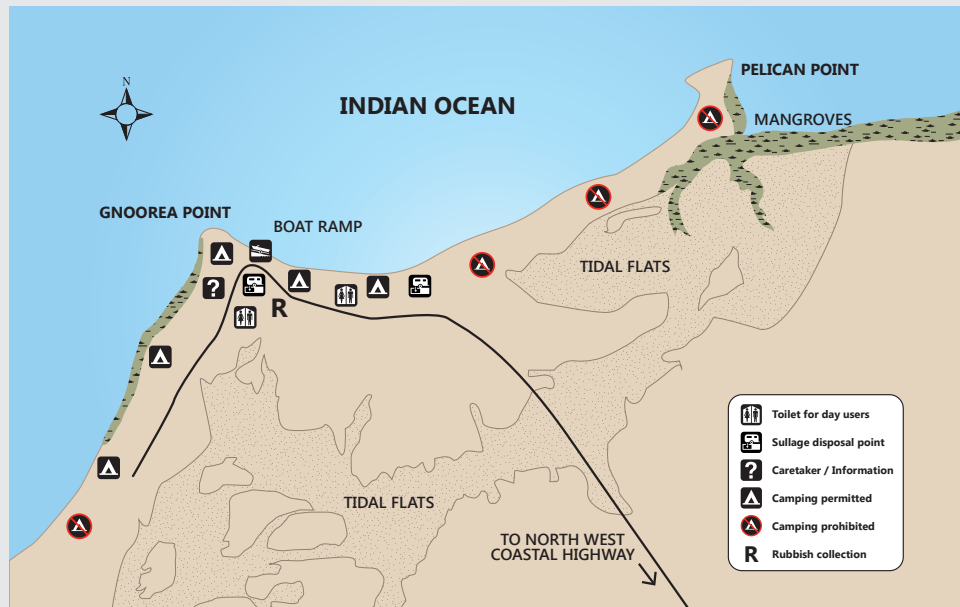
Karijini Eco Retreat provides a choice of accommodation facilities ranging from deluxe eco tents to campsites for visitors preferring to take their own accommodation. The park offers campsite areas available for campers, campervans and caravans. Self registration (entrance fees applies) at two entrances, near the Ranger Station and Mount Bruce Road.

### **MILLSTREAM-CHICHESTER NATIONAL PARK**

<http://parks.dpaw.wa.gov.au/park/millstream-chichester>

There are bush-style camping facilities at the Millstream-Chichester National Park entrance. Camping fees apply in the park and are payable at the Karratha and Roebourne Visitor Centres or at the Visitor Information Centre within the Park.

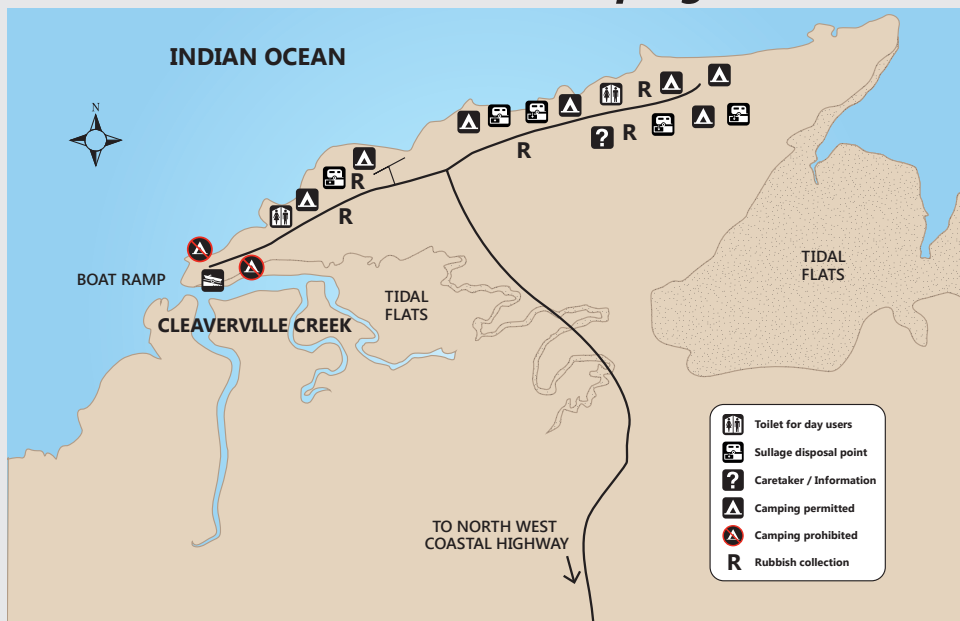
## Gnoorea Point (40-Mile) camping area



### Gnoorea Point, also known as 40-Mile is a natural, coastal camping area.

The splendour of the bay offers quality fishing and protection for those wishing to cool off in the tranquil waters. The camp area offers a natural boat ramp, public toilets for day users and sullage disposal points. Note: There is no drinking water available on site.

## Cleaverville nature-based camping area



### Cleaverville is a popular spot for camping or day trips located a quick 20 minutes northwest of Karratha.

Cleaverville also features fishing spots off the beach and at the mouth of the Cleaverville Creek. The camp area offers a natural boat ramp, public toilets for day users and sullage disposal points. Note: there is no drinking water available on site.

## Caravan and Holiday Parks Contact Information

**THE COVE CARAVAN PARK**  
259 Macleod Street, Point Samson  
Ph: 08 9187 0199  
[www.thecoveholidayvillage.com.au](http://www.thecoveholidayvillage.com.au)

**COSSACK BUDGET ACCOMMODATION**  
Cossack Foreshore  
Ph: 08 9182 1190  
Email: [cossack@karratha.wa.gov.au](mailto:cossack@karratha.wa.gov.au)

**POINT SAMSON CARAVAN PARK**  
Millars Close, Pt Samson  
Ph: 08 9187 1414  
[www.samsonbeach.com.au/caravan-park](http://www.samsonbeach.com.au/caravan-park)

**DAMPIER TRANSIT PARK** (3-night stay),  
The Esplanade, Dampier, Ph: 08 9183 1109

**DISCOVERY PARKS – PILBARA, KARRATHA**  
Rosemary Road, Karratha  
Ph: 08 9185 1855  
Email: [pilbara@discoveryparks.com.au](mailto:pilbara@discoveryparks.com.au)  
[www.discoveryholidayparks.com.au/wa/pilbara\\_karratha](http://www.discoveryholidayparks.com.au/wa/pilbara_karratha)  
Free Call: 1800 451 855

**KARRATHA CARAVAN PARK,**  
1060 Mooligunn Road, Karratha Industrial Estate  
[www.karrathacaravanpark.com.au](http://www.karrathacaravanpark.com.au)  
Ph: 08 9185 1012

**BALMORAL HOLIDAY PARK,**  
Balmoral Road, Karratha  
Ph: 08 9185 3628  
Email: [balmoral@discoveryparks.com.au](mailto:balmoral@discoveryparks.com.au)  
(seasonal – 1st May–31st August)

## Fishing and boating

One of the best reasons for holidaying on the Pilbara Coast is the fantastic fishing! If you have your own boat, natural boat ramps are available at both of the nature-based camping locations. Exercise caution when planning a trip on the water and be sure to allow for the 5-metre tides.

## Conditions of Camping per the Caravan Parks and Camping Grounds Act 1995

- 28-night maximum stay
- Caretakers, Rangers and Police are Authorised Officers; their lawful direction must be followed
- No potable water available on site
- Each campsite must have a chemical toilet; on-site toilets are for day users only
- Sullage disposal points are available
- During Camping Season, check in with the caretaker to be directed to a suitable site
- Camp only within the existing camp sites
- Maintain a 3m clearance between sites
- Site must be tidy and clear on departure
- Bins are for household rubbish only; rubbish must be placed in the bins
- Wrap and bin fish offal; do not discard in the water or around the beach and camp areas
- Bring your own firewood for cooking fires; no existing foliage to be damaged
- No open fires of any type on very high, extreme or catastrophic fire danger days
- Antisocial behavior is not tolerated
- Dogs are permitted under provisions of the *Dog Act 1976*
- Be courteous with the use of generators; switch off between 10pm and 6am
- Drive only on existing tracks; watch for wildlife, vehicles and pedestrians

Camping season runs 1 May to 30 September. Camping fees apply during this time and are to be paid in advance in full to the City of Karratha caretaker on site.

For the current list of fees, please visit [www.karratha.wa.gov.au/camping](http://www.karratha.wa.gov.au/camping).

**Campsites can be closed at any time should the safety of campers be threatened. During cyclone season (November to April) the campsites will close on Blue Alert.**

## What if you see illegal camping?

Please contact Ranger Services on 9186 8555. You may only need to supply a vehicle registration number, make and model and location of the camper. Your information will assist the City of Karratha in following up. Any person found camping illegally will be issued with an on-the-spot \$100 infringement notice and will be moved on.